

Lotus Domino Calendar Access

for SwyxWare 7.00

1. Introduction

The Calendar Access feature allows you to create Call Routing rules based on appointments in the Lotus Notes calendar. Unlike Microsoft Outlook, Lotus Notes does not differentiate between local appointments or absence.

The query “Free time” in Lotus Domino reads full-time appointments as “Out of Office”. Any other appointments are considered as “Busy”.

2. Requirements

The following program versions are required for Lotus Domino Calendar Access:

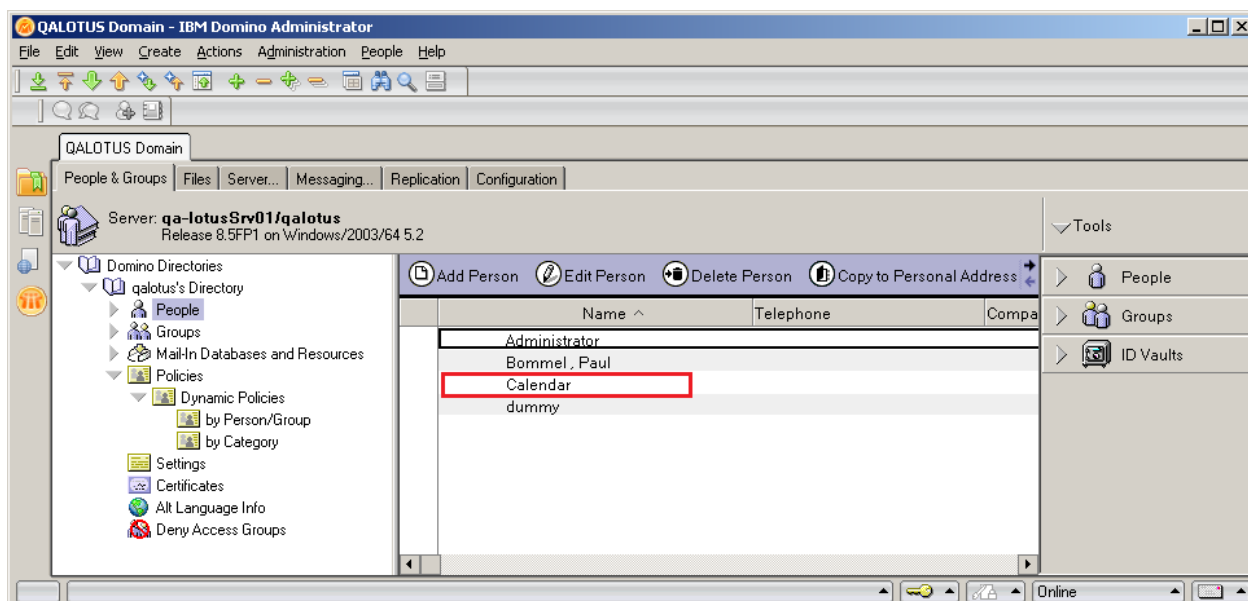
- SwyxWare 7.0
- Lotus Domino 8.5.0 (incl. Fix Pack 1)
- Lotus Notes 8.5.0 (incl. Fix Pack 1)

Important:

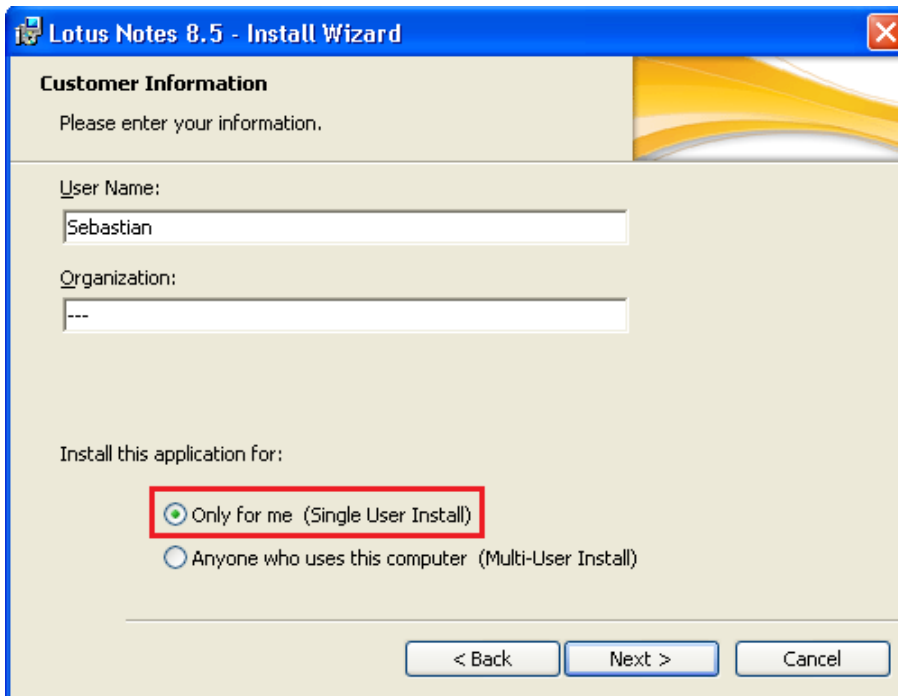
Unlike the old Lotus Domino Calendar Access, the new version does not require an installation on the Lotus Domino server. Only a normal domino user must be created.

3. Installation (Lotus)

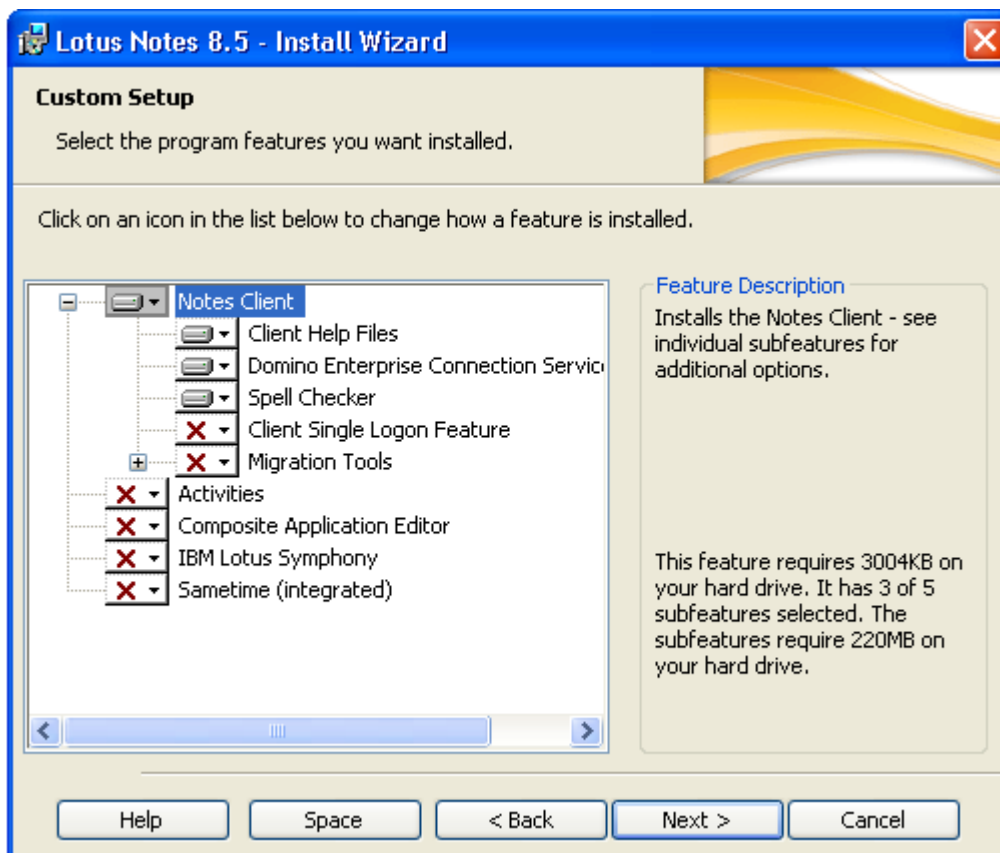
First, create a new Lotus Domino User named „Calendar“.
Please note that a Notes ID must be generated as well.



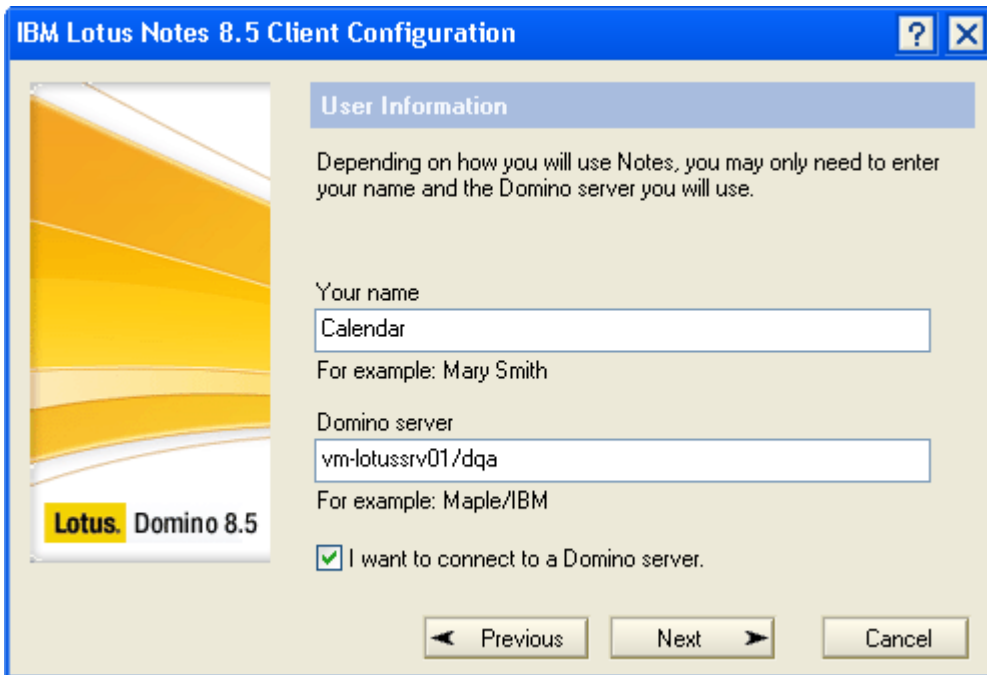
Then, install a Lotus Notes Client on the SwyxServer.
Please note that the client must be installed for **the current Windows user only**.



Select the following components for the Lotus Notes client installation:



When the installation is complete, start the Lotus Notes client. The client configuration wizard will be displayed. For the configuration, use the “Calendar” user and follow the wizard.



Close the Lotus Notes client when the configuration is complete.

4. Installation (SwyxWare)

Stop all Swyx Services on the SwyxServer computer.

Copy the file „LotusDominoAccess.dll“ to the SwyxWare installation directory (Default: %ProgramFiles%\SwyxWare).

Open a „Windows Command Prompt“ in the SwyxWare installation directory and run the following commands:

- regsvr32.exe /u ExchangeServerAccess.dll
- regsvr32.exe DominoAccess.dll

Go to „Start -> Run“ and start the program „regedit.exe“.
Open the following registry key:

32 Bit Operating System

„HKEY_LOCAL_MACHINE\Software\Swyx\IpPbxSrv\CurrentVersion\Options“

64 Bit Operating System

„HKEY_LOCAL_MACHINE\Software\Wow6432Node\Swyx\IpPbxSrv\CurrentVersion\Options“

Create the following new „String“ entry:

„CalendarAccessComponentProgID“

Use the following value for the new entry:

„DominoAccess.ESAComponent“

Go back to the following key:

32 Bit Operating System

„HKEY_LOCAL_MACHINE\Software\Swyx“

64 Bit Operating System

„HKEY_LOCAL_MACHINE\Software\Wow6432Node\Swyx“

Create the following keys:

„LotusDominoAccess\CurrentVersion\Options“

Create the following new „String“ entries:

Entry Name	Entry Value
Password	Password of the “Calendar” user that was created at the beginning
Server	Canonical server address (e.g. „CN=srv-lotus01/O=domain“)

Restart the SwyxServer machine to complete the installation.

5. User Configuration

For this read chapter „3.3.3 Installation for Calendar-Based Call Management“ in the SwyxWare Administrator manual.